

Longitude 0° 10' East from Greenwich

# Humber Entrance

## SPURN LIGHT FLOAT

DEPTHS IN METRES  
SCALE 1 : 10 000

SURVEYED BY  
Harbour Master, Humber  
ASSOCIATED BRITISH PORTS  
15th June to 9th August 2023

Depths are in metres and decimetres reduced to the chart datum given below  
Underlined figures are drying heights in metres and decimetres above chart datum  
Overhead clearance heights are above Highest Astronomical Tide  
TIDAL LEVEL AND CHART DATUM

PLACE	Heights in metres above Chart Datum				Chart Datum and remarks
	M.H.W.S.	M.H.W.N.	M.L.W.N.	M.L.W.S.	
SPURN	6.9	5.5	2.7	1.2	3.9m below O.D. Newlyn (approx L.A.T.)

### SATELLITE - DERIVED POSITIONS

Positions obtained from satellite navigation systems, such as the Global Positioning System (GPS), are normally referred to the World Geodetic System 1984 Datum. Such positions can be plotted directly on this chart.

### NATIONAL HORIZONTAL DATUM

Positions read from this chart must be adjusted by 0.02 minutes SOUTHWARD and 0.10 minutes EASTWARD before plotting on documents referred to Ordnance Survey of Great Britain 1936 (OSGB 36 Datum).

Example:  
Position on chart 53° 32'.50N, 000° 10'.50E  
lat/long adjustments 0'.02S 0'.10E

OSGB 36 position 53° 32'.48N, 000° 10'.60E

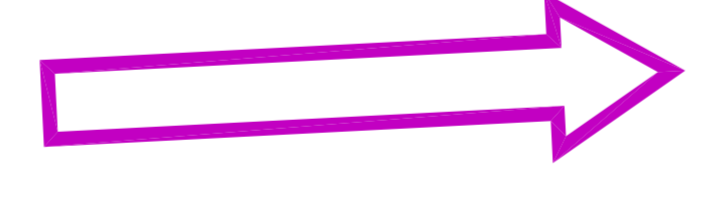
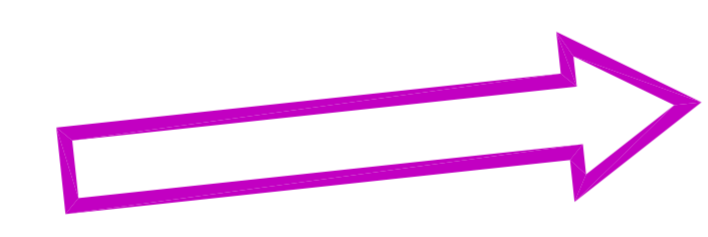
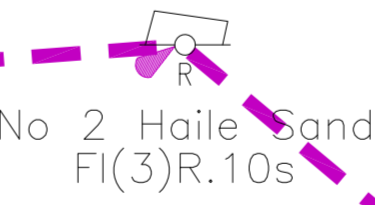
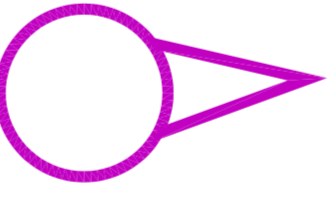
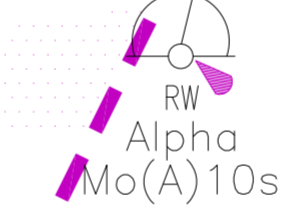
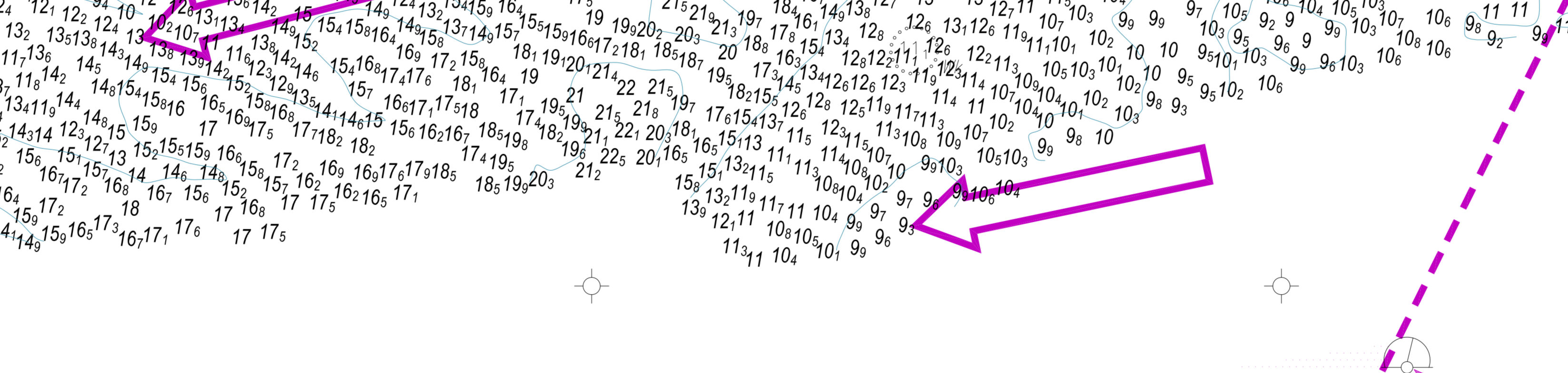
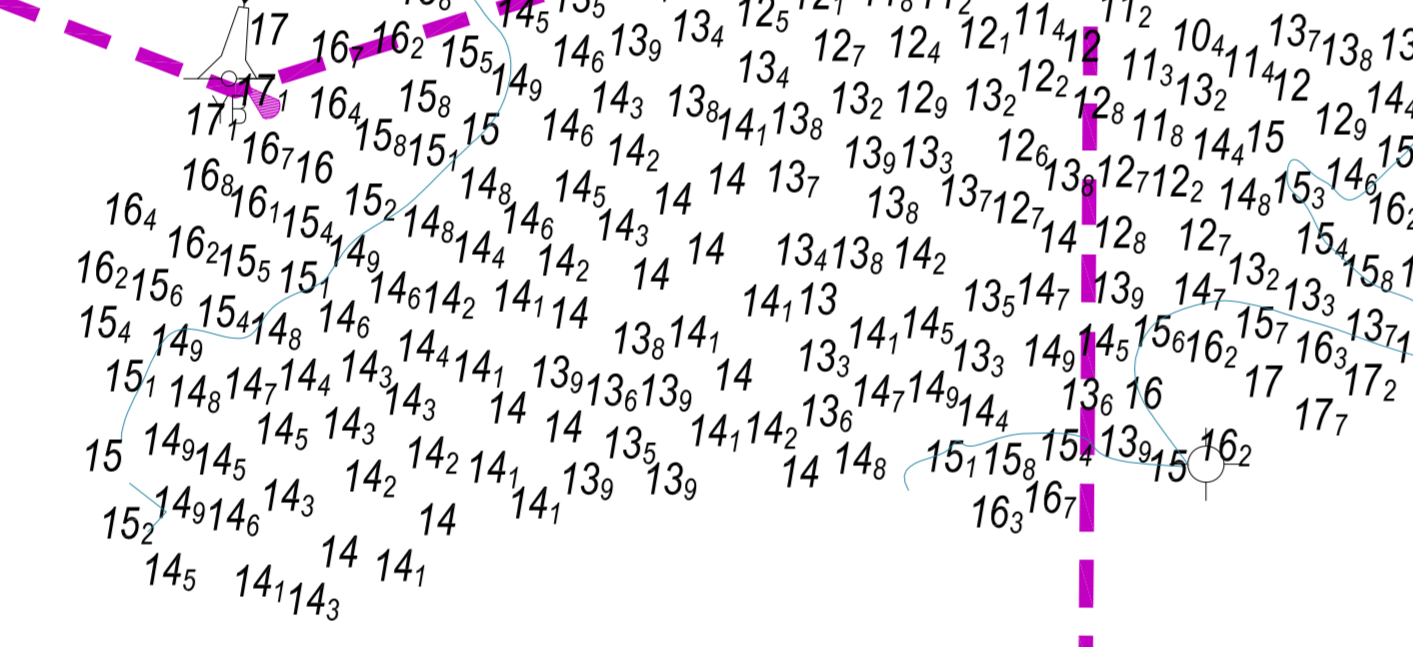
Projection :- Transverse Mercator. National Grid references are given along borders of chart.

Light stars without legends represent two fixed lights displayed vertically and are seen as red to port and green to starboard when proceeding upriver.

Whilst every care was taken in the preparation of this Chart, which is intended to provide Mariners with the data which Associated British Ports possessed at the time of its preparation, ABP gives notice that, thereafter, on account of the quickly shifting character of the river bed, no warranty is afforded that such data can be relied upon and, further, no responsibility can be accepted by ABP for any inaccuracy in the Chart or omission therefrom.  
Bathymetric soundings shown on this chart are collected to the UKHO standard: CATZOC C

## CHEQUER SHOAL

No 3 Chequer  
Q(6) + 1.15m



408000 N

408000 N

LAT 53°

LAT 53°

Longitude 0° 10' East from Greenwich

WGS 84 POSITIONS can be plotted directly on this chart

Metres  
2000  
1000  
0  
100